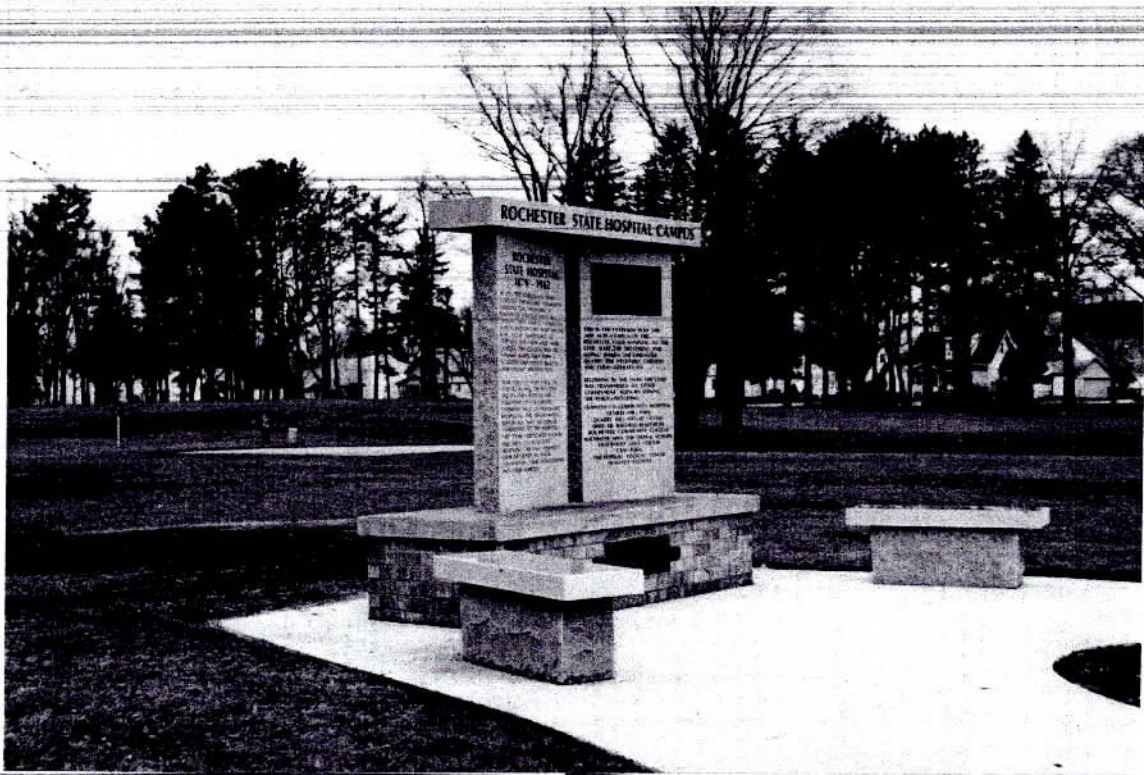




Jodi M. O'Shaughnessy/ The Post-Bulletin

State hospital memorial 10-28-2000

Berdine Erickson, left, Jeff Anderson and Shawn O'Connor unveil part of the new memorial to honor Rochester State Hospital employees Friday at East Park on East Center Street in Rochester. Erickson worked at the state hospital, now closed, for decades. "I felt we needed to leave a footprint in recognition of the state hospital workers, patients and for the Rochester community," he said.



ROCHESTER STATE HOSPITAL 1879 - 1982

IN 1879 THE INDIVIDUALS WHO CAME TO THE SECOND MINNESOTA HOSPITAL FOR THE INSANE AT ROCHESTER DID NOT HAVE AN "ILLNESS". THEY HAD A "CONDITION" WHICH NEITHER THEY NOR ANYONE ELSE COULD UNDERSTAND OR CONTROL. FOR THEM AND THEIR FAMILIES, THIS FACILITY WAS AN "ASYLUM" WHERE THEY WERE ACCEPTED AND COULD MAKE A WORTHWHILE CONTRIBUTION.

FROM THE LATE 1930S UNTIL ITS CLOSURE IN 1982, THE HOSPITAL AND ITS STAFF WERE IN THE FOREFRONT OF THE RAPIDLY EXPANDING FIELD OF PSYCHIATRIC KNOWLEDGE AND PROGRAMMING. INDIVIDUALS WERE NO LONGER "COMMITTED" TO THE HOSPITAL, THEY CAME VOLUNTARILY BECAUSE HERE THEY COULD RECEIVE TREATMENT. THE VAST MAJORITY SOON RETURNED TO THEIR COMMUNITIES, THEIR OCCUPATIONS AND THEIR FAMILIES.

THIS IS THE ENTRYWAY INTO THE 1400 ACRE CAMPUS OF THE ROCHESTER STATE HOSPITAL. TO THE EAST WERE THE TREATMENT AND LIVING WARDS, THE LIMESTONE QUARRY, THE VEGETABLE GARDENS AND FARM OPERATIONS.

BEGINNING IN THE 1960S, THE LAND WAS TRANSFERRED TO OTHER GOVERNMENT AGENCIES SERVING THE PUBLIC, INCLUDING:

- OLMSTED CO. COMMUNITY HOSPITAL
- QUARRY HILL PARK
- QUARRY HILL NATURE CENTER
- DEPT. OF NATURAL RESOURCES
- ROCHESTER COMMUNITY COLLEGE
- ROCHESTER AREA VOCATIONAL SCHOOL
- EASTWOOD GOLF COURSE
- EAST PARK
- THE FEDERAL MEDICAL CENTER
- OLMSTED COUNTY